

Total Of Resorce And Service

TORAS

Table of Contents



1. Overview	3
2. HSE Policy	4
3. Organization	6
4. Certification	7
5. Service Scope	9
6. Performance Record	10
7. Clients Record	11



1. Overview



TORAS, Total Of Resource And Service !!!

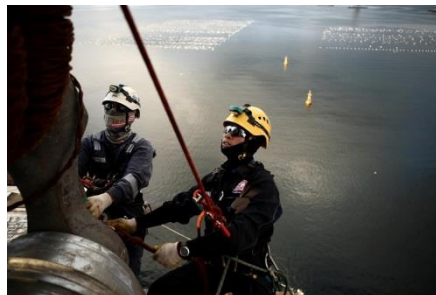
TORAS (Total Of Resource And Service) was established on 1st of November, 2011 in Geoje, Korea.

We, TORAS is the first Korean IRATA Membership company in rope access services, TORAS has grown up successfully and safely conducting all kinds of on/offshore related works such as assembly, modification, and upgrade in and out of Korea.

TORAS' IRATA-certified employees are very well aware of the importance of wearing safety gears and complying with in-house safety rules and policy at all times at work sites and it brought us a reputation as reliable zero accident company.

TORAS is now expanding our service scope to meet our clients' needs and we are becoming a total solution company who can provide on/off shore services for various projects/facilities.

Thank you very much!



CEO/ IRATA Level III

Tae-Ik, Choi



2. HSE Policy *HSE FIRST,*



Excellent Performance Next!

Every member of TORAS should go back to their loving family each day without any accident or injury from work site!!!

In an attempt to achieve zero accident at work site, TORAS' zero tolerance rule covers following activities:

► **Permit to work**

- Defines scope of work
- Identifies hazards and assesses risk
- Establishes control measures to eliminate or mitigate hazard
- Links the work to other associated work permits or simultaneous operation
- Ensure adequate control over the return to normal operations

► **Energy isolation**

- The method of isolation and discharge of stored energy are agreed and executed by a competent person
- Any stored energy is discharged
- A system of locks and tags is utilized at isolation points
- A test is conducted to ensure the isolation is effective
- Isolation effectiveness is periodically monitored

► **Ground disturbance**

- Hazard assessment of the work site is completed by the competent person
- All ground hazard, i.e. pipelines, electric cable, etc., have been identified, located and if necessary, isolated



2. HSE Policy_ *HSE FIRST,*



Excellent Performance Next!

► **Confined space entry**

- All other options have been ruled out
- Permit is issued with authorization by a responsible person
- Permit is communicated to all affected personnel and posted, as required
- All person involved are competent to do the work
- All sources of energy affecting the space have been isolated
- Testing of atmosphere is conducted, verified and repeated as often as defined by the risk assessment
- Stand by person is stationed
- Unauthorized entry is prevented

► **Working at heights**

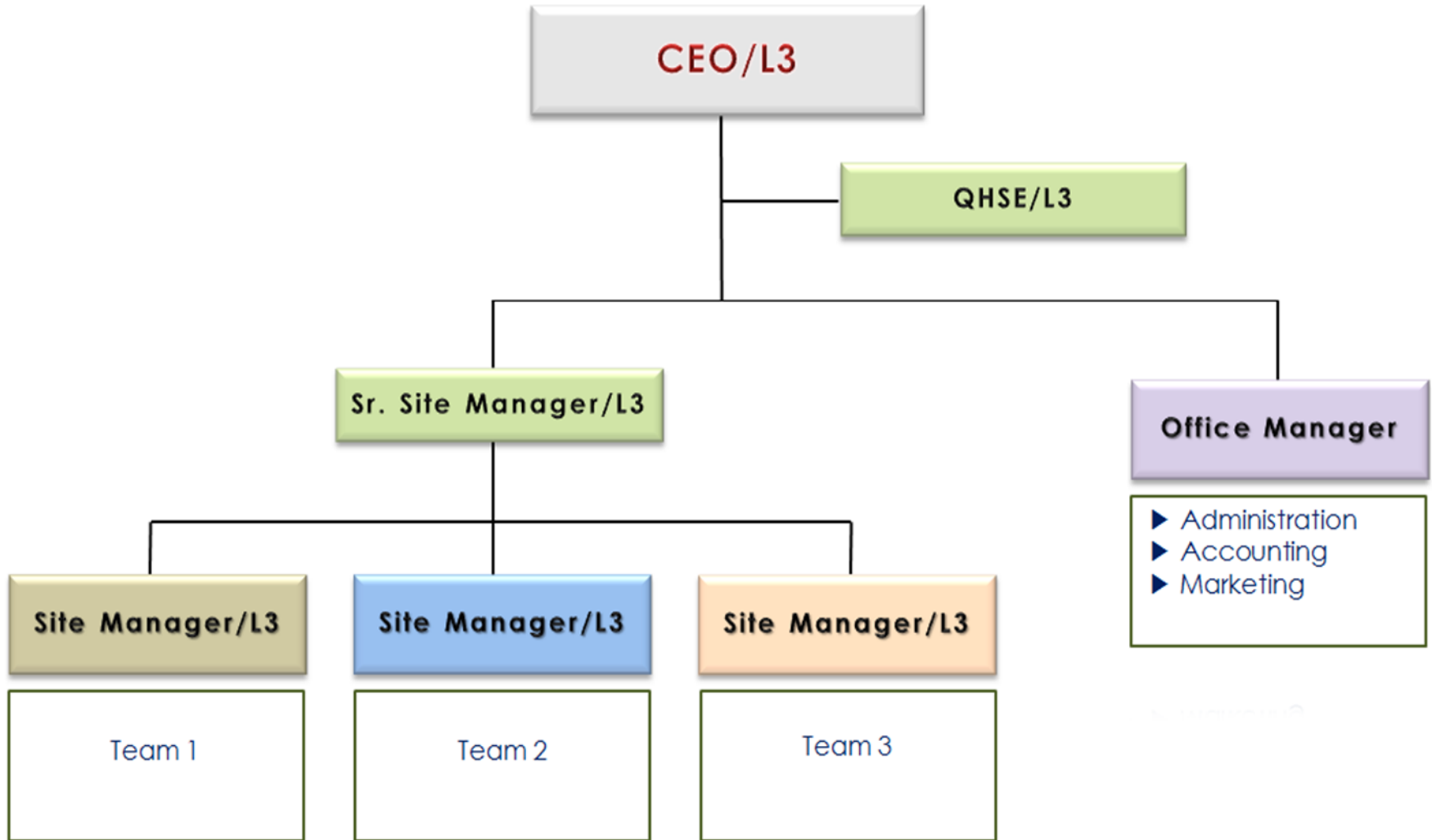
- Only certified rope man work at heights
- A fixed platform is used with guard or hand rails, verified by a competent person(s)
- Fall arrest equipment which will limit free fall to 2 meters or less is used
- Visual inspection of the fall arrest equipment and system is completed and any damaged equipment taken out of service

► **Lifting operation**

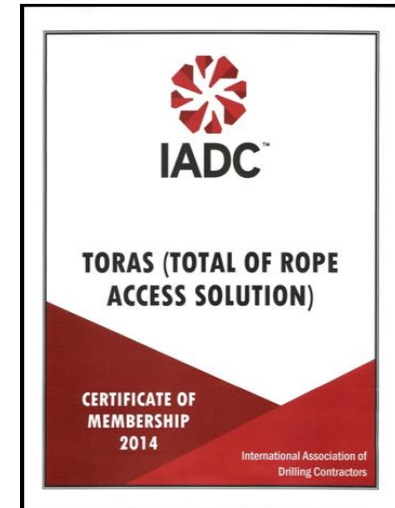
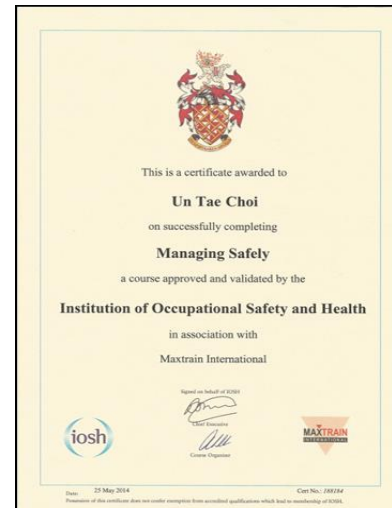
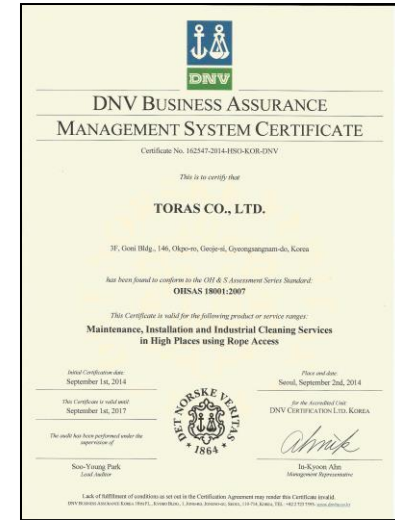
- An assessment of the lift has been completed and the lift method and equipment have been determined by a competent person(s)
- Operation of powered lifting devices is trained and certified for that equipment
- Rigging of the load is carried out by a competent person(s)
- Lifting devices and equipment have been certified for the use of the lifting equipment
- Load does not exceed dynamic and/or static capacities of the lifting equipment
- Any safety devices installed on lifting equipment are operational
- All lifting devices and equipment have been visually examined before each lift by a competent person(s)



3. Organization



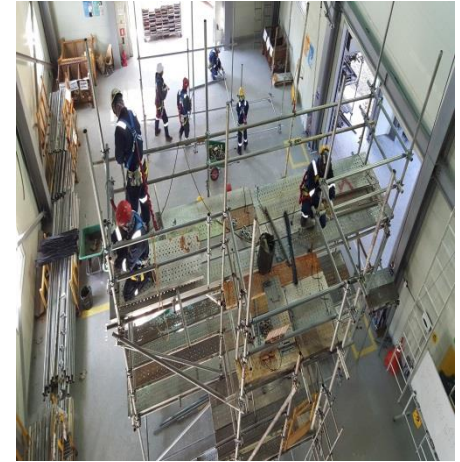
4. Certification



4. Certification



IRATA	Level 3 (Largest No. in Korea) Level 2 Level 1
Training	CISRS OSTS Scaffolder L1 Confined Space & Rescue Rigging & Slings PPE Inspector
Off shore	BOSIET Pipe & Equipment Insulation (BS standard) OPITO
Welding & Others	6G / 3G / 3F / Tig CPR, AED & First Aid



- CISRS OSTS Scaffolder -



- Confined Space & Rescue -

5. Service Scope



Rope Access Work Service



IRATA LEVEL 3 : 10
LEVEL 2 : 15
LEVEL 1 : 45

Assembly Work

Mechanical/Electric Equipment Installation

Piping System Installation

Steel Outfitting & Painting

Onboard Installation Service



E&I: 28
Mechanic & Fitter: 25
Welder: 10

Electric/Piping Installation

Vendor Installation/Modification

Electric/Piping Modification & Upgrade

Local Fabrication & Material Supply



6. Performance Record



Onshore/Offshore	Year	Type of Ship	Project Name	Place
Onshore	2011	Fixed Platform	Arkuntun Dagi by ExxonMobil	DSME
	2012	Drillship & Platform	Seadrill #6, Rowan #1 & Chevron Big Foot	SHI DSME
	2013	Drillship, Semi, & Platform	Dolphin Drilling / Tungsten Explorer / Noble Drillship Series / Atwood #2 / PDC #7 / Diamond Drillship Series / TDD #1, #2 / ODF #3 / Seadrill Drillship Series / Rowan Drillship Series / Ensco Drillship Series / Transocean #1, #2 etc.	SHI DSME HHI
	2014 2015	Drillship	Seadrill #10 #12 / Rowan #4 / Diamond #4 / Ensco #8, #9 / PDC #8 / TTD #1 / Atwood #3 #4 / Ensco #10 / TDD #2 / Bollsta Dolphin / Seadrill DS #1 #2 / Sonagol #1 / TDD-CVX / TDD#3 GOLIAT / DIAMOND / ENSCO DS 8,9 Songa#1,#2,#3 / Dolphin 2620 / Gorgon	SHI DSME HHI
Offshore	2012	Drillship	Stena Drill Ice Max for Schlumberger	French Guiana
	2014	Drillship	Maersk Drillship #1	Curacao
	2015	Fixed Platform Rig	P6055 MSP	Angola
		Fixed Platform Rig	Songa#1,#2,#3 / Transocen#1	Norway



7. Clients



Honored to present you TORAS profile.
Thank you very much!

